



It stinks and it's easy to step on. But you just can't make yourself pick it up.

It also pollutes your environment.

Here's how it works... Your dog poops on the grass. That poop contains bacteria that pose a health risk to people. When it rains or storms, the poop gets washed into the streets and flows down the storm drain into waterways where people may come into contact with it.



WHAT IF I HAVE QUESTIONS?

If you have any questions or concerns or would like to request additional information about the City of Rincon's Stormwater Program, please contact:

Mrs. Teri Lewis
Planning & Development
Director
City of Rincon
302 S. Columbia Avenue
Rincon, Georgia 31326 T:
912.826.5996
tlewis@rinconga.gov

**CLEAN WATER.
HEALTHY LIFE.**

prepared by
Integrated Science & Engineering, Inc.
www.intse.com



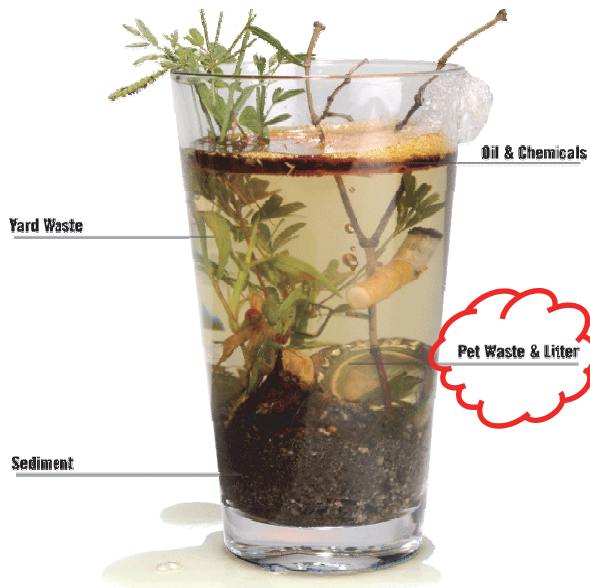
**Pick Up After
Your Pet!**

WHAT'S THE PROBLEM?

Every time it rains, thousands of pounds of accumulated and untreated pet waste can potentially wash into storm drains and flow directly into our streams, lakes and ocean.

Pet waste runoff includes bacteria and parasites that threaten the health of both people and wildlife as well as create an overly rich nutrient environment causing excess weed and algae growth.

A clean and healthy watershed is invaluable to the well-being and beauty of our community. Simple precautions can protect and preserve our watersheds.



Everything that goes into our storm drains makes it way to our streams, rivers and reservoirs...

and into what we drink...

PET WASTE MAY AFFECT YOUR HEALTH

Pets, children playing outside and adults gardening are most at risk for infection from some of the bacteria and parasites found in pet waste. Diseases that can be transmitted from pet waste include:

- 🐾 **Campylobacteriosis:** a bacterial infection causing diarrhea in humans
- 🐾 **E. coli:** a bacterial infection causing diarrhea, cramping, nausea and vomiting, urinary tract infections, fatigue, typhoid fever and Hepatitis A
- 🐾 **Giardiasis:** a protozoan infection causing diarrhea, cramping, fatigue and weight loss
- 🐾 **Salmonellosis:** the most common bacterial infection causing fever, muscle aches, headaches, vomiting and diarrhea
- 🐾 **Toxocariasis:** a parasitic infection causing cough, fever, vision loss and rash
- 🐾 **Toxoplasmosis:** a parasite carried by cats that can cause birth defects if a woman becomes infected during pregnancy and can also be a problem for people with depressed immune systems

DID YOU KNOW?

One pound of dog poop can contain 10,000,000,000 fecal coliform bacteria.



WHAT CAN YOU DO?

Be a responsible pet owner. There are safe methods for handling and disposing of pet waste. By following these easy practices you can protect both the environment and your health.

- 🐾 Pick up pet waste daily from your yard. While "organic", pet waste is not a safe fertilizer in your yard or in the watershed.
- 🐾 When you walk your pet, always carry disposable bags to pick up and dispose of waste properly. Wrap it carefully in a sealed bag to prevent spillage during collection.
- 🐾 Flush your pet waste down the toilet, so it can be treated at a sewage treatment plant.
- 🐾 Bury pet waste in your yards, at least 12 inches deep and cover with at least eight inches of soil to let it decompose slowly. Bury the waste in several different locations and keep it away from vegetable gardens.
- 🐾 Talk to your family and friends about stormwater pollution and picking up after their pets!